

25 Wellington 54 Glenhove 52 Katherine 33 Commerce 21 Scott 22 Wellington Sasol Bidvest Bank 39 Commerce 31 Commerce 35 Commerce 37 Commerce 27 Commerce

### New Developments

| Property            | Region       | Sub Region | Type   | Unit Number (Floor) | Area               | Possible Subdivision | Selling Features  | Rate    | Basement Parking Rate | Open Parking Rate | Available |
|---------------------|--------------|------------|--------|---------------------|--------------------|----------------------|---|---------|-----------------------|-------------------|-----------|
| 52 Katherine Street | Johannesburg | Sandton    | Office | Second Floor        | 1600m <sup>2</sup> | Yes                  | P-Grade development located within the New Katherine Street Precinct. Excellent Proximity to Retail and Transit Nodes | R190.00 | R999.00               | -                 | Immediate |
|                     |              |            |        | Third Floor         | 582m <sup>2</sup>  | -                    |   | R190.00 | R999.00               | -                 | Immediate |

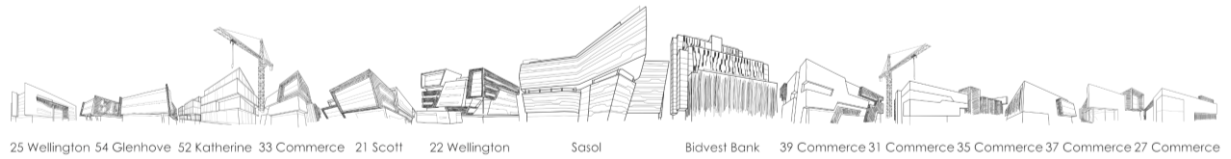
\*All areas denote **gross lettable areas** and **include** pro-rata common area

### Completed Developments

| Property                     | Region       | Sub Region | Type   | Unit Number (Floor) | Area                 | Possible Subdivision | Selling Features  | Rate    | Basement Parking Rate | Open Parking Rate | Available      |
|------------------------------|--------------|------------|--------|---------------------|----------------------|----------------------|---|---------|-----------------------|-------------------|----------------|
| 33 Princess of Wales Terrace | Johannesburg | Parktown   | Office | All 5 floors        | 4345m <sup>2</sup>   | Yes                  | Located within the Parktown Business Node with efficient highway access   | R115.00 | R500.00               | R400.00           | January 2023   |
| 25 Wellington Road           | Johannesburg | Parktown   | Office | Third Floor         | 2933m <sup>2</sup>   | Yes                  | Located within the Parktown Business Node with efficient highway access   | R115.00 | R600.00               | R400.00           | 1 Month Notice |
| 5 Girton Road                | Johannesburg | Parktown   | Office | Ground Floor        | 170m <sup>2</sup>    | -                    | Located within the Parktown Business Node with efficient highway access   | R95.00  | R550.00               | R400.00           | October 2022   |
|                              |              |            |        | First Floor         | 517m <sup>2</sup>    | Yes                  |   | R95.00  | R550.00               | R400.00           | October 2022   |
| 43 Wierda Road West          | Johannesburg | Sandton    | Office | Ground Floor        | 691m <sup>2</sup>    | -                    | Excellent Location within the New Heart of Sandton (Katherine Street)   | R70.00  | R550.00               | R400.00           | Immediate      |
|                              |              |            |        | First Floor         | 430,07m <sup>2</sup> | -                    |   | R70.00  | R550.00               | R400.00           | Immediate      |
| 21 Scott Street              | Johannesburg | Waverley   | Office | Ground Floor        | 349m <sup>2</sup>    | -                    | Located next to the M1-Highway with efficient highway access  | R150.00 | R800.00               | -                 | Immediate      |
| Katherine Towers             | Johannesburg | Sandton    | Office | Second Floor        | 500m <sup>2</sup>    | -                    | P-Grade development located within the New Katherine Street Precinct. Excellent Proximity to Retail and Transit Nodes | R200.00 | R1000.00              | -                 | Immediate      |
|                              |              |            |        | Third Floor         | 350m <sup>2</sup>    | -                    |   | R200.00 | R1000.00              | -                 | Immediate      |

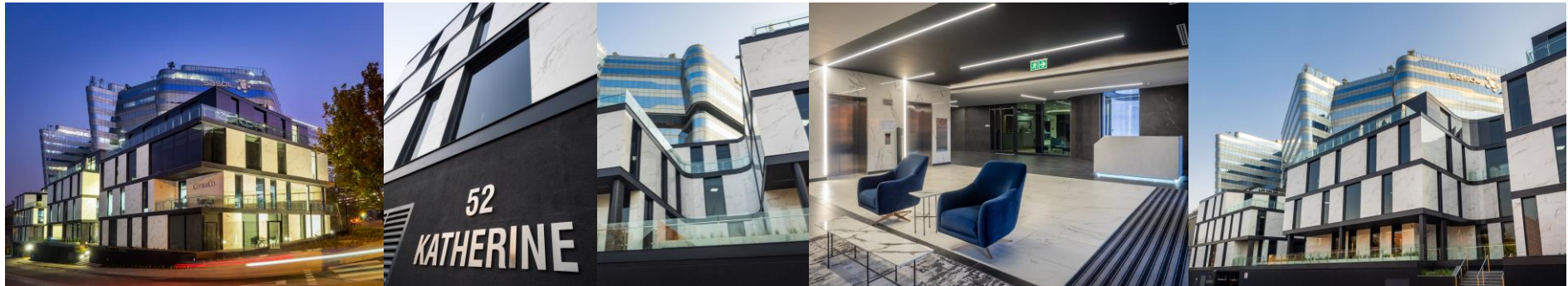
\*All areas denote **gross lettable areas** and **include** pro-rata common area





## New Developments

| Property            | Region       | Sub Region | Type   | Unit Number (Floor) | Area               | Possible Subdivision | Selling Features  | Rate    | Basement Parking Rate | Open Parking Rate | Available |
|---------------------|--------------|------------|--------|---------------------|--------------------|----------------------|---|---------|-----------------------|-------------------|-----------|
| 52 Katherine Street | Johannesburg | Sandton    | Office | Second Floor        | 1600m <sup>2</sup> | Yes                  | P-Grade development located within the New Katherine Street Precinct. Excellent Proximity to Retail and Transit Nodes | R190.00 | R999.00               | -                 | Immediate |
|                     |              |            |        | Third Floor         | 582m <sup>2</sup>  | -                    |   | R190.00 | R999.00               | -                 | Immediate |



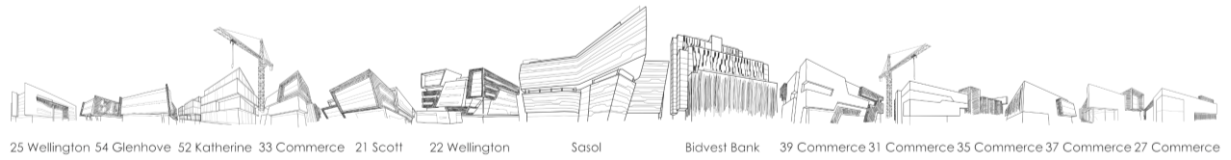
52 Katherine Street  
Sandton

## Completed Developments

| Property                     | Region       | Sub Region | Type   | Unit Number (Floor) | Area               | Possible Subdivision | Selling Features  | Rate    | Basement Parking Rate | Open Parking Rate | Available    |
|------------------------------|--------------|------------|--------|---------------------|--------------------|----------------------|---|---------|-----------------------|-------------------|--------------|
| 33 Princess of Wales Terrace | Johannesburg | Parktown   | Office | All 5 floors        | 4345m <sup>2</sup> | Yes                  | Located within the Parktown Business Node with efficient highway access | R115.00 | R500.00               | R400.00           | January 2023 |



33 Princess of Wales Terrace  
Parktown



| Property           | Region       | Sub Region | Type   | Unit Number (Floor) | Area               | Possible Subdivision | Selling Features  | Rate    | Basement Parking Rate | Open Parking Rate | Available      |
|--------------------|--------------|------------|--------|---------------------|--------------------|----------------------|---|---------|-----------------------|-------------------|----------------|
| 25 Wellington Road | Johannesburg | Parktown   | Office | Third Floor         | 2933m <sup>2</sup> | Yes                  | Located within the Parktown Business Node with efficient highway access | R100.00 | R600.00               | R400.00           | 1 Month Notice |

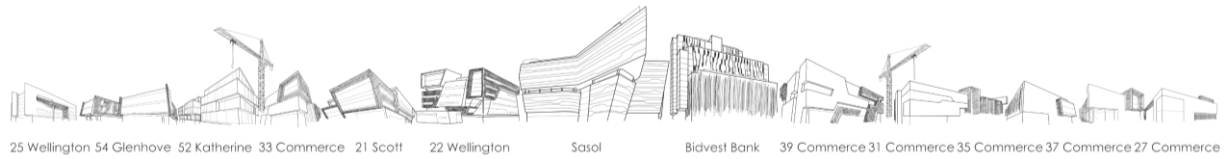


**25 Wellington Road**  
Parktown

| Property      | Region       | Sub Region | Type   | Unit Number (Floor) | Area              | Possible Subdivision | Selling Features  | Rate   | Basement Parking Rate | Open Parking Rate | Available    |
|---------------|--------------|------------|--------|---------------------|-------------------|----------------------|---|--------|-----------------------|-------------------|--------------|
| 5 Girton Road | Johannesburg | Parktown   | Office | Ground Floor        | 170m <sup>2</sup> | -                    | Located within the Parktown Business Node with efficient highway access | R95.00 | R550.00               | R400.00           | October 2022 |
|               |              |            |        | First Floor         | 517m <sup>2</sup> | Yes                  |   | R95.00 | R550.00               | R400.00           | October 2022 |



**5 Girton Road**  
Parktown



| Property            | Region       | Sub Region | Type   | Unit Number (Floor) | Area                 | Possible Subdivision | Selling Features  | Rate   | Basement Parking Rate | Open Parking Rate | Available |
|---------------------|--------------|------------|--------|---------------------|----------------------|----------------------|---|--------|-----------------------|-------------------|-----------|
| 43 Wierda Road West | Johannesburg | Sandton    | Office | Ground Floor        | 691m <sup>2</sup>    | -                    | Excellent Location within the New Heart of Sandton (Katherine Street) | R70.00 | R550.00               | R400.00           | Immediate |
|                     |              |            |        | First Floor         | 430,07m <sup>2</sup> | -                    |   | R70.00 | R550.00               | R400.00           | Immediate |

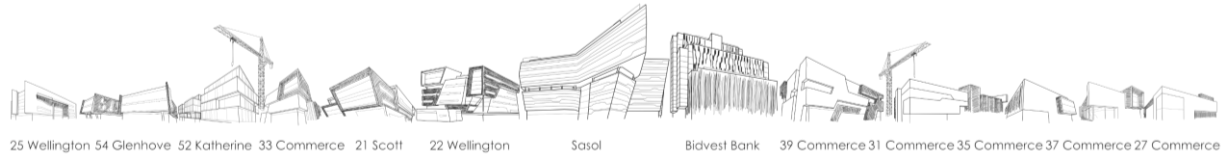


**43 Wierda Road West**  
Sandton

| Property        | Region       | Sub Region | Type   | Unit Number (Floor) | Area              | Possible Subdivision | Selling Features   | Rate    | Basement Parking Rate | Open Parking Rate | Available |
|-----------------|--------------|------------|--------|---------------------|-------------------|----------------------|--|---------|-----------------------|-------------------|-----------|
| 21 Scott Street | Johannesburg | Waverley   | Office | Ground Floor        | 349m <sup>2</sup> | -                    | Located next to the M1-Highway with efficient highway access | R150.00 | R800.00               | -                 | Immediate |



**21 Scott Street**  
Waverley



| Property         | Region       | Sub Region | Type   | Unit Number (Floor) | Area              | Possible Subdivision | Selling Features  | Rate    | Basement Parking Rate | Open Parking Rate | Available |
|------------------|--------------|------------|--------|---------------------|-------------------|----------------------|---|---------|-----------------------|-------------------|-----------|
| Katherine Towers | Johannesburg | Sandton    | Office | Second Floor        | 500m <sup>2</sup> | -                    | P-Grade development located within the New Katherine Street Precinct. Excellent Proximity to Retail and Transit Nodes | R200.00 | R1000.00              | -                 | Immediate |
|                  |              |            |        | Third Floor         | 350m <sup>2</sup> | -                    |   | R200.00 | R1000.00              | -                 | Immediate |



**Katherine Towers**  
Sandton